

酪農学園大学野生動物医学センターで登録された 獣医爬虫類学標本 (第2報)

高木 佑基・田中 祥菜・浅川 満彦

The Collection of Herpetological Specimens Held at the Wild Animal Medical Center,
Rakuno Gakuen University (Part 2)

Youki TAKAKI, Sachina TANAKA and Mitsuhiko ASAKAWA
(Accepted 11 July 2014)

序

近年、一般家庭では確実に飼育不適で、外来種問題の源でもあるエキゾチック・ペットの輸入数が急増し、獣医大学においてもこういった動物の診療教育も考慮する必要性が指摘されている。一方で、また、遺棄されたペット爬虫類が野外で発見されたとする報道もあとをたない。このような動物により寄生蠕虫類が日本に侵入する可能性も高まり、流通過程にある動物、あるいはすでに外来種化してしまった爬虫類を対象とした調査も行われている^[1]。そして、検査後の動物材料の多くは証拠標本 voucher specimens として登録番号 (WAMC/AS) とともに本学野生動物医学センター (以下、WAMC) に保存された (後述)。WAMC では 1995 年から 2006 年までに蓄積された爬虫類標本のカタログを 2006 年に作成した^[2]。本稿はその追加報告である。すなわち、2006 年から 2014 年までに WAMC に搬入された爬虫類標本を前回のカタログ同様の記述方式^[2] で記した。

登録された種および標本数

本稿で追加記載された種はカメ、有鱗あるいはワニの計 3 目に所属する 3 目 5 亜目 26 科 56 属 83 種 329 個体であった (Appendix 1)。これにより、WAMC に搬入されたものは計 5 亜目 31 科 92 属 166 種 (亜種含む) の 621 個体 (あるいは標本) となった。内訳は、カメ目 2 亜目 10 科 35 属 69 種 232 個体、有鱗目のトカゲ亜目 12 科 37 属 53 種 174 個体、同へビ亜目 7 科 17 属 41 種 207 個体、ワニ目 1 亜目 2 科 3 属 3 種 8 個体であった (Table. 1)。なお、第 1 報^[2] において、その後の検討により学名などで訂正があ

ると認められた場合、Table. 1 の当該標本番号に* を付け、明示した。収集されたサンプルの一部は日本産在来種であったが、大部分が国外を原産地とする種で、ほとんどが業者由来のものであり産地不明となった。

標本提供者と標本作製

酪農学園大学獣医学部での野生動物医学教育の開始前年 (1995 年) 以来、北海道内外の園館および動物商のご協力のもと、死体や糞便などが回収されていた。これらは標本登録後、寄生虫検査用のサンプルリングを行った。その後、爬虫類の体部については、宿主の分類学的な証憑とするため、99%エタノールにて固定し (大型種については腐敗防止のためホルマリンを使用)、乾燥標本としてきた。乾燥標本は紫外線による退色を防止するため、遮光した状態で保存されている。一部は再冷凍あるいは液浸標本で保存されている。また、糞便については寄生虫学的検査に供され、検査に用いた糞液は 70%エタノール溶液にて固定し、証拠標本として保存されるほか、一部は冷凍にて保管された。これらのうち、獣医爬虫類医学やエキゾチック・ペット診療学などの教材として、展示することができる乾燥あるいは液浸標本 194 点の画像を添付した (Appendix 2)。

謝 辞

WAMC での検査は文部科学省戦略的研究拠点形成支援事業助成および同省科研費 (26460513) により行われている。また、検査材料は、北海道内外の多くの理解ある園館および業者の方々からご提供頂いた。さらに、標本作製では WAMC を拠点に研究をされた学生諸兄や爬虫類医学に興味を持つ有志が

参画した。

引用文献

1. 浅川満彦. 2013. 最近経験した爬虫類における寄生虫病自験事例. 日獣会誌, 66: 665-670.
2. 浅川満彦・岩尾 一・谷山弘行. 2006. 酪農学園大学野生動物医学センターで登録された獣医爬虫類学標本 (第1報). 酪農大紀, 自然科学, 30: 221-228.

要 旨

2006年から2014年までに酪農学園大学野生動物医学センターに搬入された爬虫類標本3目5亜目26科56属83種329個体について、前回のカタログに準じ追記した。これにより、爬虫類標本は計3目5亜目31科92属166種621個体となった。これらのうち、獣医爬虫類学などの教材利用の利便性を図るために、展示可能な標本194点の写真を添付した。

Summary

Between 2006 and 2014, 329 individuals of 83 reptile species have been donated and the herpetological specimens have been preserved in the Wild Animal Medical Center, Rakuno Gakuen University. Totally, the collection includes stuffed specimens and helminths, and 621 specimens of 166 species belonging to 3 orders. Among them, photographs of the specimens could be used for the educational activities were given. The specimens are not only voucher specimens that document the taxonomic status of the host reptiles examined, but also educational materials for veterinary herpetology.

Table 1 The collection of herpetological specimens including Asakawa et al.^[2] at the Wild Animal Medical Center, Rakuno Gakuen University, listed in taxonomical orders.

ORDER	SUBORDER	FAMILY	Jpn. Name	Sci. name	AS No.	Total
TESTUDINES						
CRYPTODIRA						
Cheloniidae						
			Aka umigame	<i>Caretta caretta</i>	321, 8275, 8276, 8277, 8820, 8821, 8822, 8823, 8824, 8825, 9289, 9290, 9291	13
			Ao umigame	<i>Chelonia mydas</i>	334, 8826, 8827, 9316	4
			Taimai	<i>Eretmochelys imbricate</i>	8164	1
Kinosternidae						
			Toubu dorogame	<i>Kinosternon subrubrum</i>	1162, 1163	2
			Nioigame sp.	<i>Kinosternon</i> sp.	411	1
			Kabuto nioigame	<i>Sternotherum carinatum</i>	2909*	1
Emydidae						
			Kibosi isigame	<i>Clemmys guttata</i>	1191, 1878	2
			Amimegame	<i>Deirochelys reticularia</i>	2919	1
			Barbour chizugame	<i>Graptemys barbouri</i>	348, 349, 350, 351, 417	5
			Alabama chizugame	<i>Graptemys pulchra</i>	2925, 2926	2
			Texas chizugame	<i>Graptemys versa</i>	1870	1
			Chizugame sp.	<i>Graptemys</i> sp.	1152, 1190, 2935, 2936	4
			Kisuigame	<i>Malaclemys terrapin</i>	408, 1956, 2937	3
			Nishiki kisuigame	<i>Malaclemys terrapin macrospilota</i>	1871	1
			Indo setakagame	<i>Pangshura tecta</i>	13362, 14676	2
			Konkinna numagame	<i>Pseudemys concinna</i>	409, 1869, 1872, 1873, 1874, 1875, 1876, 2911	8
			Florida numagame	<i>Pseudemys floridana</i>	1164, 1165, 1166, 1167	4
			Carolina hakogame	<i>Terrapene carolina</i>	2940	1
			Mississippi akamimigame	<i>Trachemys scripta elegans</i>	410, 1157, 1189, 3254, 3255, 3299, 3302, 3303, 3304, 3321, 3323, 3324, 3331, 3332, 3333, 3334, 3335, 3337, 3338, 3339, 3340, 3341, 3344, 3366, 3370, 3371, 3415, 3561, 3562, 3563, 12771, 14101, 14167, 14605, 14606	35
			Kibaragame	<i>Trachemys scripta scripta</i>	405, 406, 2669	3
Geoemydidae						
			Karaguurugame	<i>Callagur borneoensis</i>	1154, 2924	2
			Kanton kusagame	<i>Chinemys nigricans</i>	1864*, 1865*, 1866*, 1867*, 1868*	5
			Kusagame	<i>Chinemys reevesii</i>	14099, 14102, 14371, 14381, 14604	5
			Hainan moegihakogame	<i>Cistoclemmys galbinifrons hainanensis</i>	1184	1
			Maree hakogame	<i>Cuora amboinensis</i>	415, 7111, 11481	3
			Moegi hakogame	<i>Cuora galbinifrons</i>	13646, 13651, 13762	3
			Supengura yamagame	<i>Geoemyda spengleri</i>	13771, 14641	2
			Kanmurigame	<i>Hardella thurjii</i>	1160, 1161	2
			Toge yamagame	<i>Heosemys spinosa</i>	2912	1
			Nishikuigame	<i>Malayemys subtrijuga</i>	2923	1
			Annangame	<i>Mauremys annamensis</i>	6961	1
			Nihon ishigame	<i>Mauremys japonica</i>	2941, 9045, 14064	3
			Minami ishigame	<i>Mauremys mutica</i>	1188, 8486	2
			Hanagame	<i>Ocadia sinensis</i>	414, 2931, 2932, 2933	4
			Mexico akasuji yamagame	<i>Rhinoclemmys pulcherrima pulcherrima</i>	13650	1
			Barbour akasuji yamagame	<i>Rhinoclemmys pulcherrima rogerbarbouri</i>	1183*, 1187*, 1954*, 1975*	4
			Yotsume ishigame	<i>Sacalia quadriocellata</i>	1150, 8251, 9114	3
			Hojiro kurogame	<i>Siebenrockiella crassicolis</i>	1155*, 1957*	2
Platysternidae						
			Ooatamagame	<i>Platysternon megacephalum</i>	1153, 1159, 2916	3
			Chugoku ootamagame	<i>Platysternon megacephalum megacephalum</i>	1158*	1
			Shiui ootamagame	<i>Platysternon megacephalum shiui</i>	1156*	1

ORDER	SUBORDER	FAMILY	Jpn. Name	Sci. name	AS No.	Total
		Testudinidae				
			Houshagame	<i>Astrochelys radiata</i>	13652, 13743, 13773, 13776, 13782, 14422, 14426, 4679	8
			Akaashigame	<i>Geochelone carbonaria</i>	1879, 3031	2
			Hoshigame	<i>Geochelone elegans</i>	2913, 2917, 11274, 13531	4
			Arudabura zougame	<i>Geochelone gigantean</i>	13744	1
			Hyoumongame	<i>Geochelone pardalis</i>	389, 1185, 2939	3
			Babukokku hyoumongame	<i>Geochelone pardalis babcocki</i>	11480	1
			Kezume rikugame	<i>Geochelone sulcata</i>	390, 11443	2
			Erongata rikugame	<i>Indotestudo elongate</i>	2938*	1
			Bell seoregame	<i>Kinixys belliana</i>	2922, 2934	2
			Home seoregame	<i>Kinixys homeana</i>	1186	1
			Seoregame sp.	<i>Kinixys</i> sp.	387, 388	2
			Emisu mutsuashigame	<i>Manouria emys</i>	3032	1
			Kumonosugame	<i>Pyxis arachnoids</i>	13758, 14431	2
			Hirao rikugame	<i>Pyxis planicauda</i>	13770, 14703	2
			Girisha rikugame	<i>Testudo graeca</i>	392*, 1955*	2
			Horsfield rikugame	<i>Testudo horsfieldii</i>	354, 355, 356, 391, 400, 401, 402, 403, 1880, 7112, 11444	11
			Fuchizori rikugame	<i>Testudo marginata</i>	393	1
		Chelydridae				
			Kamitsukigame	<i>Chelydra serpentine</i>	2915*, 2918*, 3355*, 3356*, 3357*, 3358*, 3404*, 3574*, 3575*, 3576*, 3577*, 3578*, 14100, 14382, 14406, 14607	16
			Florida kamitsukigame	<i>Chelydra serpentina osceola</i>	416	1
			Wanigame	<i>Macrochelys temminckii</i>	8915, 9141, 11419, 11435	4
		Trionychidae				
			Supponmodoki	<i>Carettochelys insculpta</i>	14034	1
			Nihon suppon	<i>Pelodiscus sinensis</i>	407, 7151	2
	PLEURODIRA					
		Chelidae				
			Siebenrock nagakubigame	<i>Chelodina siebenrocki</i>	352, 1151, 2927, 2928	4
			Nagakubigame sp.	<i>Chelodina</i> sp.	413, 2920	2
			Matamata	<i>Chelus fimbriatus</i>	347, 395, 412, 2910, 2921, 2930	6
			Macquari magekubigame	<i>Emydura macquarrii</i>	396*	1
			Kouhiro nagakubigame	<i>Macrochelodina expansa</i>	13749	1
		Pelomedusidae				
			Afurica numa yokokubigame	<i>Pelomedusa subrufa subrufa</i>	353*, 397*, 398*, 399*	4
SQUAMATA						
	SAURIA					
		Agamidae				
			Karotesu sp.	<i>Calotes</i> sp.	12275	1
			Erimakitokage	<i>Chlamydosaurus kingie</i>	11425	1
			Oo moridoragaon	<i>Gonocephalus grandis</i>	2430, 2431, 2432	3
			Hokaketokage sp.	<i>Hydrosaurus</i> sp.	2425	1
			Sakishima kinoboritokage	<i>Japalura polygonata ishigakiensis</i>	8706	1
			Okinawa kinoboritokage	<i>Japalura polygonata polygonata</i>	5797, 8645	2
			Indoshina water doragon	<i>Physignathus cocincinus</i>	2427, 2428, 2692	3
			Futoagohigetokage	<i>Pogona vitticeps</i>	7110	1
			Mari togeoagama	<i>Uromastyx dispar maliensis</i>	2422*	1
			Togeoagama sp.	<i>Uromastyx</i> sp.	2423	1
		Chamaeleonidae				
			Eboshi kamereon	<i>Chamaeleo calyptoratus</i>	9726, 13533, 13746, 13778, 13788, 14427, 14430, 14432, 14652, 14672, 14674, 14678, 14693	13
			Pansa kamereon	<i>Furcifer pardalis</i>	8511, 8521, 13532, 13747, 13760	5

ORDER	SUBORDER	FAMILY	Jpn. Name	Sci. name	AS No.	Total
		Eublepharidae				
			Boushi tokagemodoki	<i>Coleonyx mitratus</i>	5794, 5905, 5906, 12379, 12380	5
			Hyoumon tokagemodoki	<i>Eublepharis macularius</i>	1170*, 1171*, 1172*, 2685*, 7186	5
			Ashinaga tokagemodoki	<i>Goniurosaurus araneus</i>	5578, 5579	2
		Gekkonidae				
			Newguinea oo hosoyubiyamori	<i>Cyrtodactylus irianjayaensis</i>	2676, 2699, 5582	3
			Tokkeiyamori	<i>Gekko gecko</i>	5592, 5593, 5909, 5910, 5911, 5912, 13361, 13757, 13759, 14404	10
			Minamiyamori	<i>Gekko hokouensis</i>	8704	1
			Yashiyamori	<i>Gekko vittatus</i>	11436, 11437, 11438	3
			Somewake sasakureyamori	<i>Paroedura pictus</i>	2680, 11442, 12381, 12382, 12383, 12387	6
			Kura tobiyamori	<i>Ptychozoon kuhli</i>	5586, 5587, 5588, 5589, 5590, 5591, 12384, 12385	8
			Torukisutan sukinkuyamori	<i>Teratoscincus scincus</i>	5583*	1
		Gerrhosauridae				
			Arumajirotokage	<i>Cordylus cataphractus</i>	13359, 13526, 13647	3
			Yoroitokage sp.	<i>Cordylus</i> sp.	2903	1
		Helodermatidae				
			America dokutokage	<i>Heloderma suspectum</i>	13525, 13536, 13739, 13755, 13774, 13784	6
		Iganidae				
			Gurin anoru	<i>Anolis carolinensis</i>	5796, 5899, 5900, 5901, 5902, 5903, 5904	7
			Anoru sp.	<i>Anolis</i> sp.	2655, 2661	2
			Gurin bashirisuku	<i>Basiliscus plumifrons</i>	2902	1
			Kubiwatokage	<i>Crotaphytus collaris</i>	2426, 2660	2
			Sai iguana	<i>Cyclura cornuta</i>	13527, 13530, 13741, 13769, 13780, 13785, 14429	7
			Hyoutokage	<i>Gambelia wislizenii</i>	2694	1
			Gurin iguana	<i>Iguana iguana</i>	5580*, 11441, 12386, 13955, 13956	5
			Toge chakuwara	<i>Sauromalus hispidus</i>	13535, 13742, 13772, 13775, 13779, 13781, 14423, 14428, 14673, 14680, 14692	11
			Chakuwara sp.	<i>Sauromalus</i> sp.	1168, 1181	2
			Marakaito haritokage	<i>Sceloporus malachiticus</i>	2701, 5584, 5585	3
			Iwa haritokage	<i>Sceloporus poinsettia</i>	1169*	1
		Lactidae				
			Nihon kanahebi	<i>Takydromus tachydromoides</i>	3203*	1
		Scincidae				
			Omakitokage	<i>Corucia zebrata</i>	9054, 9074, 13529, 13765, 14425, 14645, 14702	7
			Nihon tokage	<i>Plestiodon japonicus</i>	394*, 5907*, 5908*	3
			Hasuobi aojitatokage	<i>Tiliqua scincoides</i>	2420, 2421, 9717, 14405	4
			Matsukasa tokage	<i>Trachydosaurus rugosus</i>	13358, 13537, 13767, 13786, 14644, 14696, 14697	7
			Akame kabutotokage	<i>Tribolonotus gracilis</i>	14730	1
		Teiidae				
			Teguu	<i>Tupinambis teguixin</i>	2697, 2698	2
		Varanidae				
			Dyumeriru ootokage	<i>Varanus dumerili</i>	2665, 2668	2
			Sabanna ootokage	<i>Varanus exanthematicus</i>	2424, 7104, 11422	3
			Aohoso ootokage	<i>Varanus macraei</i>	14700, 14701	2
			Nile ootokage	<i>Varanus niloticus</i>	2656, 5581	2
			Midorihoso ootokage	<i>Varanus prasinus</i>	13363	1
			Hanabuto ootokage	<i>Varanus salvadorii</i>	7143	1
			Mizu ootokage	<i>Varanus salvator</i>	2667, 2696	2
			Yojiri ootokage	<i>Varanus timorensis</i>	2429	1
			Ootokage sp.	<i>Varanus</i> sp.	2653, 2659, 14091	3
		Xenosauridae				
			Shina wanitokage	<i>Shinisaurus crocodilurus</i>	9056, 14675, 14677	3

ORDER	SUBORDER	FAMILY	Jpn. Name	Sci. name	AS No.	Total
	SERPENTES					
		Boidae				
			Boa	<i>Boa constrictor</i>	5303, 5323	2
			Niji boa	<i>Epicrates cenchria</i>	2686*	1
			Kenya sunaboa	<i>Eryx colubrinus</i>	2700*, 5305*	2
			Brown sunaboa	<i>Eryx johni</i>	2904*	1
			Tataru sunaboa	<i>Eryx tataricus</i>	8258, 8259, 8261, 8262, 8270	5
			Oo anakonda	<i>Eumeces murinus</i>	13528, 13756	2
			Kiuro anakonda	<i>Eumeces notaeus</i>	14636, 14695, 14699	3
			Rojii boa	<i>Lichanura trivirgata</i>	2654	1
		Pythonidae				
			Jangurukapetto nishikihebi	<i>Morelia spilota cheynei</i>	13766, 14642, 14694	3
			Midori nishikihebi	<i>Morelia viridis</i>	1173*, 2674*, 2675*, 2677*, 2678*, 13648, 13748, 13763, 13777, 14648, 14698	11
			Burma nishikihebi	<i>Python molurus bivittatus</i>	1179, 1180, 8708, 13740, 13764, 13783, 14424, 14650	8
			Indo nishikihebi	<i>Python molurus molurus</i>	2687	1
			Boru nishikihebi	<i>Python regius</i>	2688, 5366, 5380, 13751	4
			Amime nishikihebi	<i>Python reticulatus</i>	14647, 14651	2
			Nishikihebi sp.	<i>Python</i> sp.	2670, 14165	2
		Colubridae				
			Ryuukyuu aohebi	<i>Cyclophiops semicarinatus</i>	8510	1
			Sakishima madara	<i>Dinodon rufozonatus walli</i>	5051*	1
			Akamata	<i>Dinodon semicarinatum</i>	5045*, 8629, 8630, 12389	4
			Futamonnamera	<i>Elaphe bimaculata</i>	5055, 5056	2
			Aodaisho	<i>Elaphe climacophora</i>	230, 800, 2907, 5050, 5316, 5333, 5364, 6854, 7670, 7827, 8626, 9228, 9630, 9631, 9632, 9633, 9634, 9638, 9639, 9640, 9641, 9649, 9651, 9654, 9655, 9656, 9662, 9664, 9667, 9668, 9695, 9765, 10070, 10071, 10073, 10074, 10075, 10076, 10077, 10078, 10079, 10080, 10081, 10082, 10083, 10086, 10087, 10202, 10203, 10204, 10205, 10206, 10211, 10212, 10213, 10216, 10217, 10218, 10219, 10220, 10221, 10222, 10422, 10423, 10424, 10425, 10441, 10442, 10443, 10444, 10446, 10494, 10495, 11258, 11263, 11273, 11424, 11439, 11682, 14072, 14078, 14079	82
			Jimuguri	<i>Elaphe conspicillata</i>	5317, 5334, 5365, 9774, 9843, 12344, 12388, 14040, 14049, 14082, 14083, 14084, 14086	13
			Akadaisho	<i>Elaphe guttata</i>	1174, 1175, 2666, 2671, 2672, 2673, 2679, 2681, 14704	9
			Shimahebi	<i>Elaphe quadrivirgata</i>	231, 5052, 5053, 6863, 8609, 8833, 11423, 13534, 14043, 14085	10
			Sakishima sujio	<i>Elaphe taeniura schmackeri</i>	5381, 8742, 11339	3
			Maree sujio	<i>Elaphe taeniura ridleyi</i>	14649	1
			Tairiku sujio	<i>Elaphe taeniura taeniura</i>	5054	1
			Namera sp.	<i>Elaphe</i> sp.	5269, 14077	2
			Seibu shishibanahebi	<i>Heterodon nasicus</i>	1178, 2691	2
			California kinguhebi	<i>Lampropeltis getula californiae</i>	1177	1
			Florida kinguhebi	<i>Lampropeltis getula floridana</i>	1176	1
			Arizona yamakinguhebi	<i>Lampropeltis pyromelana pyromelana</i>	2682	1
			Mirukuhebi	<i>Lampropeltis triangulum</i>	2693, 5363	2
			Yamakinguhebi	<i>Lampropeltis zonata</i>	2690	1
			Kinguhebi sp.	<i>Lampropeltis</i> sp.	2657, 2658	2
			Gaatahebi sp.	<i>Thamnophis</i> sp.	2683	1

ORDER	SUBORDER	FAMILY	Jpn. Name	Sci. name	AS No.	Total
		Elapidae				
			Fudo kobura sp.	<i>Naja</i> sp.	14031	1
		Natricidae				
			Yamakagashi	<i>Rhabdophis tigrinus</i>	14039	1
		Viperidae				
			Nihon Mamushi	<i>Gloydius blomhoffi</i>	14038	1
			Hon habu	<i>Protobothrops flavoviridis</i>	6318, 6960, 14681, 14682, 14683, 14684, 14685, 14686, 14687, 14688, 14689	11
			Habu sp.	<i>Protobothrops</i> sp.	5302, 14056	2
		Xenodermatidae				
			Takachihoebi	<i>Achalinus spinalis</i>	8701, 9048	2
			Amamitakachihoebi	<i>Achalinus weneri</i>	8705	1
CROCODILIA						
	EUSUCHIA					
		Alligatoridae				
			Yousukouwani	<i>Alligator sinensis</i>	13761, 14089, 14092	3
		Crocodylidae				
			Shamuwani	<i>Crocodylus siamensis</i>	14090	1
			Gabiarumodoki	<i>Tomistoma schlegelii</i>	13745, 13750, 13768, 14643	4

Appendix 1 Herpetological specimens and materials in the collection of the Wild Animal Medical Center, Rakuno Gakuen University, between 2006 and 2014, listed in order of registration number.

AS No.	Jpn. Name	Sci. name	Coll. Yr./mon.	Loc. (City, Pref.)	Collector or original owner
407	Nihon suppon	<i>Pelodiscus sinensis</i>	u	u	u
6318	Hon habu	<i>Protobothrops flavoviridis</i>	u	Okinawa	u
6854	Aodaisho	<i>Elaphe climacophora</i>	2006/08	Ebetsu, Hokkaido	Asakawa, M.
6863	Shimahebi	<i>Elaphe quadrivirgata</i>	u	u	u
6960	Hon habu	<i>Protobothrops flavoviridis</i>	u	Okinawa	Ootani, T.
6961	Annangame	<i>Mauemys annamensis</i>	u	u	Iwao, H.
7104	Sabanna ootokage	<i>Varanus exanthematis</i>	2007/03	u	Iwao, H.
7110	Futoagohigetokage	<i>Pogona vitticeps</i>	2007/04	u	Ootani, T.
7111	Maree hakogame	<i>Cuora amboinensis</i>	2007/04	u	Ootani, T.
7112	Horsfield rikugame	<i>Testudo horsfieldi</i>	2007/04	u	Ootani, T.
7143	Hanabuto ootokage	<i>Varanus salvadorii</i>	2007/04	u	u
7151	Nihon suppon	<i>Pelodiscus sinensis</i>	2005/07	Nakatsu, Ooita	Nakamura, S.
7186	Hyoumon tokagemodoki	<i>Eublepharis macularius</i>	2007/05	u	u
7670	Aodaisho	<i>Elaphe climacophora</i>	2008/10	Niigata	u
7827	Aodaisho	<i>Elaphe climacophora</i>	2007/07	Ebetsu, Hokkaido	u
8164	Taimai	<i>Eretmochelys imbricata</i>	u	u	u
8251	Yotsume ishigame	<i>Sacalia quadriocellata</i>	2007/11	u	Maruyama Zoo
8258	Tatar sunaboa	<i>Eryx tataricus</i>	2007/11	u	Maruyama Zoo
8259	Tatar sunaboa	<i>Eryx tataricus</i>	2007/11	u	Maruyama Zoo
8261	Tatar sunaboa	<i>Eryx tataricus</i>	2007/11	u	Maruyama Zoo
8262	Tatar sunaboa	<i>Eryx tataricus</i>	2007/11	u	Maruyama Zoo
8270	Tatar sunaboa	<i>Eryx tataricus</i>	2007/12	u	Maruyama Zoo
8275	Aka umigame	<i>Caretta caretta</i>	2007/12	u	u
8276	Aka umigame	<i>Caretta caretta</i>	2007/12	u	u
8277	Aka umigame	<i>Caretta caretta</i>	2007/12	u	u
8486	Minami ishigame	<i>Mauemys mutica</i>	2008/04	Okinawa	Ootani, T.
8510	Ryuukyuu aohebi	<i>Cyclophiops semicarinatus</i>	2008/04	Okinawa	Ootani, T.
8511	Pansa kamereon	<i>Furcifer pardalis</i>	2008/04	u	Aihara, H.
8521	Pansa kamereon	<i>Furcifer pardalis</i>	2008/05	u	Aihara, H.
8609	Shimahebi	<i>Elaphe quadrivirgata</i>	2008/06	Ebetsu, Hokkaido	Asakawa, M.
8626	Aodaisho	<i>Elaphe climacophora</i>	2008/07	u	u
8629	Akamata	<i>Dinodon semicarinatum</i>	2008/08	Okinawa	Ootani, T.
8630	Akamata	<i>Dinodon semicarinatum</i>	2008/07	Okinawa	Ootani, T.
8645	Okinawa kinoboritokage	<i>Japalura polygonata polygonata</i>	2008/07	Okinawa	Ootani, T.
8701	Takachihoebi	<i>Achalinus spinalis</i>	u	u	u
8704	Minamiyamori	<i>Gekko hokouensis</i>	2008/09	Okinawa	u
8705	Amamitakachihoebi	<i>Achalinus werneri</i>	2008/09	Okinawa	u
8706	Sakishima kinoboritokage	<i>Japalura polygonata ishigakiensis</i>	2008/09	Okinawa	u
8708	Biruma nisikihebi	<i>Python molurus bivittatus</i>	u	u	Okinawa kodomonokuni
8742	Sakishima sujio	<i>Elaphe taeniura schmackeri</i>	2008/10	Okinawa	Ootani, T.
8820	Aka umigame	<i>Caretta caretta</i>	2008/12	u	Otaru Aquarium
8821	Aka umigame	<i>Caretta caretta</i>	u	u	u
8822	Aka umigame	<i>Caretta caretta</i>	2009/01	u	u
8823	Aka umigame	<i>Caretta caretta</i>	2009/01	u	u
8824	Aka umigame	<i>Caretta caretta</i>	2009/07	u	u
8825	Aka umigame	<i>Caretta caretta</i>	2009/01	u	u
8826	Ao umigame	<i>Chelonia mydas</i>	2008/12	u	u
8827	Ao umigame	<i>Chelonia mydas</i>	2009/04	u	u
8833	Shimahebi	<i>Elaphe quadrivirgata</i>	2008/12	Hyogo	Kounotori no sato
8915	Wanigame	<i>Macrochelys temminckii</i>	2006/08	u	Himeji Aquarium
9045	Nihon ishigame	<i>Mauemys japonica</i>	u	u	u
9048	Takachihoebi	<i>Achalinus spinalis</i>	2010/03	Niigata	Aizawa
9054	Omakitokage	<i>Corucia zebrata</i>	2009/04	u	Maruyama Zoo
9056	Shina wanitokage	<i>Shinisaurus crocodilurus</i>	u	u	Maruyama Zoo
9074	Omakitokage	<i>Corucia zebrata</i>	u	u	u
9114	Yotsume ishigame	<i>Sacalia quadriocellata</i>	2009/05	u	u
9141	Wanigame	<i>Macrochelys temminckii</i>	2009/06	u	Himeji Aquarium
9228	Aodaisho	<i>Elaphe climacophora</i>	2009/08	Ebetsu, Hokkaido	u
9289	Aka umigame	<i>Caretta caretta</i>	u	u	Himeji Aquarium
9290	Aka umigame	<i>Caretta caretta</i>	u	u	Himeji Aquarium
9291	Aka umigame	<i>Caretta caretta</i>	u	u	Himeji Aquarium
9316	Ao umigame	<i>Chelonia mydas</i>	u	u	u
9630	Aodaisho	<i>Elaphe climacophora</i>	2010/03	Iwakuni, Yamaguchi	u
9631	Aodaisho	<i>Elaphe climacophora</i>	2010/03	Iwakuni, Yamaguchi	u
9632	Aodaisho	<i>Elaphe climacophora</i>	2010/03	Iwakuni, Yamaguchi	u
9633	Aodaisho	<i>Elaphe climacophora</i>	2010/03	Iwakuni, Yamaguchi	u
9634	Aodaisho	<i>Elaphe climacophora</i>	2010/03	Iwakuni, Yamaguchi	u

AS No.	Jpn. Name	Sci. name	Coll. Yr./mon.	Loc. (City, Pref.)	Collector or original owner
9638	Aodaisho	<i>Elaphe climacophora</i>	2010/03	Iwakuni, Yamaguchi	u
9639	Aodaisho	<i>Elaphe climacophora</i>	2010/03	Iwakuni, Yamaguchi	u
9640	Aodaisho	<i>Elaphe climacophora</i>	2010/03	Iwakuni, Yamaguchi	u
9641	Aodaisho	<i>Elaphe climacophora</i>	2010/03	Iwakuni, Yamaguchi	u
9649	Aodaisho	<i>Elaphe climacophora</i>	2010/03	Iwakuni, Yamaguchi	u
9651	Aodaisho	<i>Elaphe climacophora</i>	2010/03	Iwakuni, Yamaguchi	u
9654	Aodaisho	<i>Elaphe climacophora</i>	2010/03	Iwakuni, Yamaguchi	u
9655	Aodaisho	<i>Elaphe climacophora</i>	2010/03	Iwakuni, Yamaguchi	u
9656	Aodaisho	<i>Elaphe climacophora</i>	2010/03	Iwakuni, Yamaguchi	u
9662	Aodaisho	<i>Elaphe climacophora</i>	2010/03	Iwakuni, Yamaguchi	u
9664	Aodaisho	<i>Elaphe climacophora</i>	2010/03	Iwakuni, Yamaguchi	u
9667	Aodaisho	<i>Elaphe climacophora</i>	2010/03	Iwakuni, Yamaguchi	u
9668	Aodaisho	<i>Elaphe climacophora</i>	2010/03	Iwakuni, Yamaguchi	u
9695	Aodaisho	<i>Elaphe climacophora</i>	2010/03	Iwakuni, Yamaguchi	u
9717	Hasuobi aojitatokage	<i>Tiliqua scincoides</i>	2010/05	u	Saito, H.
9726	Eboshi kameroon	<i>Chamaeleo calyptoratus</i>	u	u	u
9765	Aodaisho	<i>Elaphe climacophora</i>	2010/06	Iwakuni, Yamaguchi	u
9774	Jimuguri	<i>Elaphe conspicillata</i>	2010/06	Ebetsu, Hokkaido	Asakawa, M.
9843	Jimuguri	<i>Elaphe conspicillata</i>	2010/07	Ebetsu, Hokkaido	Asakawa, M.
10070	Aodaisho	<i>Elaphe climacophora</i>	2010/09	Iwakuni, Yamaguchi	u
10071	Aodaisho	<i>Elaphe climacophora</i>	2010/09	Iwakuni, Yamaguchi	u
10073	Aodaisho	<i>Elaphe climacophora</i>	2010/09	Iwakuni, Yamaguchi	u
10074	Aodaisho	<i>Elaphe climacophora</i>	2010/09	Iwakuni, Yamaguchi	u
10075	Aodaisho	<i>Elaphe climacophora</i>	2010/09	Iwakuni, Yamaguchi	u
10076	Aodaisho	<i>Elaphe climacophora</i>	2010/09	Iwakuni, Yamaguchi	u
10077	Aodaisho	<i>Elaphe climacophora</i>	2010/09	Iwakuni, Yamaguchi	u
10078	Aodaisho	<i>Elaphe climacophora</i>	2010/09	Iwakuni, Yamaguchi	u
10079	Aodaisho	<i>Elaphe climacophora</i>	2010/09	Iwakuni, Yamaguchi	u
10080	Aodaisho	<i>Elaphe climacophora</i>	u	Iwakuni, Yamaguchi	u
10081	Aodaisho	<i>Elaphe climacophora</i>	2010/09	Iwakuni, Yamaguchi	u
10082	Aodaisho	<i>Elaphe climacophora</i>	2010/09	Iwakuni, Yamaguchi	u
10083	Aodaisho	<i>Elaphe climacophora</i>	2010/09	Iwakuni, Yamaguchi	u
10086	Aodaisho	<i>Elaphe climacophora</i>	2010/09	Iwakuni, Yamaguchi	u
10087	Aodaisho	<i>Elaphe climacophora</i>	2010/09	Iwakuni, Yamaguchi	u
10202	Aodaisho	<i>Elaphe climacophora</i>	2010/09	Iwakuni, Yamaguchi	u
10203	Aodaisho	<i>Elaphe climacophora</i>	2010/09	Iwakuni, Yamaguchi	u
10204	Aodaisho	<i>Elaphe climacophora</i>	2010/09	Iwakuni, Yamaguchi	u
10205	Aodaisho	<i>Elaphe climacophora</i>	2010/09	Iwakuni, Yamaguchi	u
10206	Aodaisho	<i>Elaphe climacophora</i>	2010/09	Iwakuni, Yamaguchi	u
10211	Aodaisho	<i>Elaphe climacophora</i>	2010/09	Iwakuni, Yamaguchi	u
10212	Aodaisho	<i>Elaphe climacophora</i>	2010/09	Iwakuni, Yamaguchi	u
10213	Aodaisho	<i>Elaphe climacophora</i>	2010/09	Iwakuni, Yamaguchi	u
10216	Aodaisho	<i>Elaphe climacophora</i>	2010/10	Iwakuni, Yamaguchi	u
10217	Aodaisho	<i>Elaphe climacophora</i>	2010/10	Iwakuni, Yamaguchi	u
10218	Aodaisho	<i>Elaphe climacophora</i>	2010/10	Iwakuni, Yamaguchi	u
10219	Aodaisho	<i>Elaphe climacophora</i>	2010/10	Iwakuni, Yamaguchi	u
10220	Aodaisho	<i>Elaphe climacophora</i>	2010/10	Iwakuni, Yamaguchi	u
10221	Aodaisho	<i>Elaphe climacophora</i>	2010/10	Iwakuni, Yamaguchi	u
10222	Aodaisho	<i>Elaphe climacophora</i>	2010/10	Iwakuni, Yamaguchi	u
10422	Aodaisho	<i>Elaphe climacophora</i>	2010/11	Iwakuni, Yamaguchi	u
10423	Aodaisho	<i>Elaphe climacophora</i>	2010/11	Iwakuni, Yamaguchi	u
10424	Aodaisho	<i>Elaphe climacophora</i>	2010/11	Iwakuni, Yamaguchi	u
10425	Aodaisho	<i>Elaphe climacophora</i>	2010/11	Iwakuni, Yamaguchi	u
10441	Aodaisho	<i>Elaphe climacophora</i>	2010/11	Iwakuni, Yamaguchi	u
10442	Aodaisho	<i>Elaphe climacophora</i>	2010/11	Iwakuni, Yamaguchi	u
10443	Aodaisho	<i>Elaphe climacophora</i>	2010/11	Iwakuni, Yamaguchi	u
10444	Aodaisho	<i>Elaphe climacophora</i>	2010/11	Iwakuni, Yamaguchi	u
10446	Aodaisho	<i>Elaphe climacophora</i>	2010/11	Iwakuni, Yamaguchi	u
10494	Aodaisho	<i>Elaphe climacophora</i>	u	u	u
10495	Aodaisho	<i>Elaphe climacophora</i>	u	u	u
11258	Aodaisho	<i>Elaphe climacophora</i>	u	u	u
11263	Aodaisho	<i>Elaphe climacophora</i>	u	u	u
11273	Aodaisho	<i>Elaphe climacophora</i>	u	u	u
11274	Hoshigame	<i>Geochelone elegans</i>	u	u	u
11339	Sakishima sujio	<i>Elaphe taeniura schmackeri</i>	u	u	u
11419	Wanigame	<i>Macrocheilus temminckii</i>	u	u	u
11422	Sabanna ootokage	<i>Varanus exanthematicus</i>	u	u	u
11423	Shimahebi	<i>Elaphe quadrivirgata</i>	u	u	u
11424	Aodaisho	<i>Elaphe climacophora</i>	u	u	u
11425	Erimakitokage	<i>Chlamydosaurus kingii</i>	u	u	u

AS No.	Jpn. Name	Sci. name	Coll. Yr./mon.	Loc. (City, Pref.)	Collector or original owner
11435	Wanigame	<i>Macrochelys temminckii</i>	u	u	u
11436	Yasihamori	<i>Gekko vittatus</i>	u	u	u
11437	Yasihamori	<i>Gekko vittatus</i>	u	u	u
11438	Yasihamori	<i>Gekko vittatus</i>	u	u	u
11439	Aodaisho	<i>Elaphe climacophora</i>	u	u	u
11441	Gurin iguana	<i>Iguana iguana</i>	u	u	u
11442	Somewake sasakureyamori	<i>Paroedura pictus</i>	u	u	u
11443	Kezume rikugame	<i>Geochelone sulcata</i>	u	u	u
11444	Horsfield rikugame	<i>Testudo horsfieldi</i>	u	u	u
11480	Babukokku hyoumongame	<i>Geochelane pardalis babcocki</i>	u	u	u
11481	Maree hakogame	<i>Cuora amboinensis</i>	u	u	u
11682	Aodaisho	<i>Elaphe climacophora</i>	2011/07	Ebetsu, Hokkaido	Asakawa, M.
12275	Karotesu sp.	<i>Calotes sp.</i>	u	u	u
12344	Jimuguri	<i>Elaphe conspicillata</i>	u	u	u
12379	Boushi tokagemodoki	<i>Coleonyx mitratus</i>	u	u	u
12380	Boushi tokagemodoki	<i>Coleonyx mitratus</i>	u	u	u
12381	Somewake sasakureyamori	<i>Paroedura pictus</i>	u	u	u
12382	Somewake sasakureyamori	<i>Paroedura pictus</i>	u	u	u
12383	Somewake sasakureyamori	<i>Paroedura pictus</i>	u	u	u
12384	Kuyu tobiyamori	<i>Ptychozoon kuhli</i>	u	u	u
12385	Kuyu tobiyamori	<i>Ptychozoon kuhli</i>	u	u	u
12386	Gurin iguana	<i>Iguana iguana</i>	u	u	u
12387	Somewake sasakureyamori	<i>Paroedura pictus</i>	u	u	u
12388	Jimuguri	<i>Elaphe conspicillata</i>	u	u	u
12389	Akamata	<i>Dinodon semicarinatum</i>	u	u	u
12771	Mississippi akamimigame	<i>Trachemys scripta elegans</i>	2012/09	Ebetsu, Hokkaido	Asakawa, M.
13358	Matsukasa tokage	<i>Trachydosaurus rugosus</i>	2013/u	u	Maruyama Zoo
13359	Arumajirotokage	<i>Cordylus cataphractus</i>	2012/10	u	Maruyama Zoo
13361	Tokkeiyamori	<i>Gekko gecko</i>	2013/02	u	Maruyama Zoo
13362	Indo setakagame	<i>Pangshura tecta</i>	2013/02	u	Maruyama Zoo
13363	Midorihoso ootokage	<i>Varanus prasinus</i>	2013/01	u	Maruyama Zoo
13525	America dokutokage	<i>Heloderma suspectum</i>	2013/02	u	Maruyama Zoo
13526	Arumajirotokage	<i>Cordylus cataphractus</i>	2013/02	u	Maruyama Zoo
13527	Sai iguana	<i>Cyclura cornuta</i>	2013/02	u	Maruyama Zoo
13528	Oo anaconda	<i>Eunectes murinus</i>	2013/02	u	Maruyama Zoo
13529	Omakitokage	<i>Conucia zeburata</i>	2013/03	u	Maruyama Zoo
13530	Sai iguana	<i>Cyclura cornuta</i>	2013/03	u	Maruyama Zoo
13531	Hoshigame	<i>Geochelone elegans</i>	2013/03	u	Maruyama Zoo
13532	Pansa kamereon	<i>Furcifer pardalis</i>	2013/04	u	Maruyama Zoo
13533	Eboshi kamereon	<i>Chamaeleo calyptoratus</i>	2013/03	u	Maruyama Zoo
13534	Shimahebi	<i>Elaphe quadrivirgata</i>	2013/04	u	Maruyama Zoo
13535	Toge chakuwara	<i>Sauromalus hispidus</i>	2013/04	u	Maruyama Zoo
13536	America dokutokage	<i>Heloderma suspectum</i>	2013/03	u	Maruyama Zoo
13537	Matsukasa tokage	<i>Trachydosaurus rugosus</i>	2013/03	u	Maruyama Zoo
13646	Moegi hakogame	<i>Cuora galbinifrons</i>	2013/04	u	Maruyama Zoo
13647	Arumajirotokage	<i>Cordylus cataphractus</i>	2013/03	u	Maruyama Zoo
13648	Midori nishikihebi	<i>Morelia viridis</i>	2013/03	u	Maruyama Zoo
13650	Mexico akasuji yamagame	<i>Rhinoclemmys pulcherrima pulcherrima</i>	2013/04	u	Maruyama Zoo
13651	Moegi hakogame	<i>Cuora galbinifrons</i>	2013/04	u	Maruyama Zoo
13652	Houshagame	<i>Astrochelys radiata</i>	2013/04	u	Maruyama Zoo
13739	America dokutokage	<i>Heloderma suspectum</i>	2013/04	u	Maruyama Zoo
13740	Burma nishikihebi	<i>Python molurus bivittatus</i>	2013/04	u	Maruyama Zoo
13741	Sai iguana	<i>Cyclura cornuta</i>	2013/05	u	Maruyama Zoo
13742	Toge chakuwara	<i>Sauromalus hispidus</i>	2013/05	u	Maruyama Zoo
13743	Houshagame	<i>Astrochelys radiata</i>	2013/05	u	Maruyama Zoo
13744	Arudabura zougame	<i>Geochelone gigantea</i>	2013/05	u	Maruyama Zoo
13745	Gabiarumodoki	<i>Tomistoma schlegelii</i>	2013/05	u	Maruyama Zoo
13746	Eboshi kamereon	<i>Chamaeleo calyptoratus</i>	2013/05	u	Maruyama Zoo
13747	Pansa kamereon	<i>Furcifer pardalis</i>	2013/05	u	Maruyama Zoo
13748	Midori nishikihebi	<i>Morelia viridis</i>	2013/05	u	Maruyama Zoo
13749	Kouhiro nagakubigake	<i>Macrochelodina expansa</i>	2013/05	u	Maruyama Zoo
13750	Gabiarumodoki	<i>Tomistoma schlegelii</i>	2013/05	u	Maruyama Zoo
13751	Boru nishikihebi	<i>Python regius</i>	2013/04	u	Maruyama Zoo
13755	America dokutokage	<i>Heloderma suspectum</i>	2013/05	u	Maruyama Zoo
13756	Oo anaconda	<i>Eunectes murinus</i>	2013/04	u	Maruyama Zoo
13757	Tokkeiyamori	<i>Gekko gecko</i>	2013/04	u	Maruyama Zoo
13758	Kumonosugame	<i>Pyxis arachnoides</i>	2013/u	u	Maruyama Zoo
13759	Tokkeiyamori	<i>Gekko gecko</i>	2013/u	u	Maruyama Zoo
13760	Pansa kamereon	<i>Furcifer pardalis</i>	2013/u	u	Maruyama Zoo
13761	Yousukouwani	<i>Alligator sinensis</i>	2013/05	u	Maruyama Zoo

AS No.	Jpn. Name	Sci. name	Coll. Yr./mon.	Loc. (City, Pref.)	Collector or original owner
13762	Moegi hakogame	<i>Cuora galbinifrons</i>	2013/05	u	Maruyama Zoo
13763	Midori nishikihebi	<i>Morelia viridis</i>	2013/06	u	Maruyama Zoo
13764	Burma nishikihebi	<i>Python molurus bivittatus</i>	2013/06	u	Maruyama Zoo
13765	Omakitokage	<i>Corucia zebrata</i>	2013/06	u	Maruyama Zoo
13766	Jangurukapetto nishikihebi	<i>Morelia spilota cheynei</i>	2013/06	u	Maruyama Zoo
13767	Matsukasa tokage	<i>Trachydosaurus rugosus</i>	2013/06	u	Maruyama Zoo
13768	Gabiarumodoki	<i>Tomistoma schlegelii</i>	2013/05	u	Maruyama Zoo
13769	Sai iguana	<i>Cyclura cornuta</i>	2013/06	u	Maruyama Zoo
13770	Hirao rikugame	<i>Pyxis planicauda</i>	2013/06	u	Maruyama Zoo
13771	Supengura yamagame	<i>Geoemyda spengleri</i>	2013/06	u	Maruyama Zoo
13772	Toge chakuwara	<i>Sauromalus hispidus</i>	2013/06	u	Maruyama Zoo
13773	Houshagame	<i>Astrochelys radiata</i>	2013/06	u	Maruyama Zoo
13774	America dokutokage	<i>Heloderma suspectum</i>	2013/07	u	Maruyama Zoo
13775	Toge chakuwara	<i>Sauromalus hispidus</i>	2013/08	u	Maruyama Zoo
13776	Housyagame	<i>Astrochelys radiata</i>	2013/07	u	Maruyama Zoo
13777	Midori nishikihebi	<i>Morelia viridis</i>	2013/07	u	Maruyama Zoo
13778	Eboshi kamereon	<i>Chamaeleo calyptoratus</i>	2013/09	u	Maruyama Zoo
13779	Toge chakuwara	<i>Sauromalus hispidus</i>	2013/07	u	Maruyama Zoo
13780	Sai iguana	<i>Cyclura cornuta</i>	2013/07	u	Maruyama Zoo
13781	Toge chakuwara	<i>Sauromalus hispidus</i>	2013/10	u	Maruyama Zoo
13782	Houshagame	<i>Astrochelys radiata</i>	2013/10	u	Maruyama Zoo
13783	Burma nishikihebi	<i>Python molurus bivittatus</i>	2013/09	u	Maruyama Zoo
13784	America dokutokage	<i>Heloderma suspectum</i>	2013/09	u	Maruyama Zoo
13785	Sai iguana	<i>Cyclura cornuta</i>	2013/10	u	Maruyama Zoo
13786	Matsukasa tokage	<i>Trachydosaurus rugosus</i>	2013/09	u	Maruyama Zoo
13788	Eboshi kamereon	<i>Chamaeleo calyptoratus</i>	2013/10	u	Maruyama Zoo
13955	Gurin iguana	<i>Iguana iguana</i>	2013/07	Ishigaki Island, Okinawa	Fukuyamashiritu zoo
13956	Gurin iguana	<i>Iguana iguana</i>	2013/07	Ishigaki Island, Okinawa	Fukuyamashiritu zoo
14031	Fudo kobura sp.	<i>Naja sp.</i>	1967/09	u	Hokkaido katei gakkou museum
14034	Supponmodoki	<i>Carettochelys insculpta</i>	2013/12	u	Onodera. K
14038	Nihon Mamushi	<i>Gloydius blomhoffi</i>	u	u	Hokkaido katei gakkou museum
14039	Yamakagashi	<i>Rhabdophis tigrinus</i>	1933/04	Mt. Itsuka	Hokkaido katei gakkou museum
14040	Jimuguri	<i>Elaphe conspicillata</i>	1966/08	u	Hokkaido katei gakkou museum
14043	Shimahebi	<i>Elaphe quadrivirgata</i>	u	u	Hokkaido katei gakkou museum
14049	Jimuguri	<i>Elaphe conspicillata</i>	u	u	Hokkaido katei gakkou museum
14056	Habu sp.	<i>Trimeresurus sp.</i>	2005/07	u	Hokkaido katei gakkou museum
14064	Nihon ishigame	<i>Mauromys japonica</i>	1951/07	u	Hokkaido katei gakkou museum
14072	Aodaisho	<i>Elaphe climacophora</i>	u	u	Hokkaido katei gakkou museum
14077	Namera sp.	<i>Elaphe sp.</i>	u	u	Hokkaido katei gakkou museum
14078	Aodaisho	<i>Elaphe climacophora</i>	u	u	Hokkaido katei gakkou museum
14079	Aodaisho	<i>Elaphe climacophora</i>	u	u	Hokkaido katei gakkou museum
14082	Jimuguri	<i>Elaphe conspicillata</i>	u	u	Hokkaido katei gakkou museum
14083	Jimuguri	<i>Elaphe conspicillata</i>	u	u	Hokkaido katei gakkou museum
14084	Jimuguri	<i>Elaphe conspicillata</i>	u	u	Hokkaido katei gakkou museum
14085	Shimahebi	<i>Elaphe quadrivirgata</i>	u	u	Hokkaido katei gakkou museum
14086	Jimuguri	<i>Elaphe conspicillata</i>	u	u	Hokkaido katei gakkou museum
14089	Yousukouwani	<i>Alligator sinensis</i>	u	u	Hokkaido katei gakkou museum
14090	Shamuwani	<i>Crocodylus siamensis</i>	u	u	Hokkaido katei gakkou museum
14091	Ootokage sp.	<i>Varanus sp.</i>	u	u	Hokkaido katei gakkou museum
14092	Yousukouwani	<i>Alligator sinensis</i>	u	u	Hokkaido katei gakkou museum
14099	Kusagame	<i>Chinemys reevesii</i>	2013/07	Shizuoka	Kato. H
14100	Kamitsukigame	<i>Chelydra serpentina</i>	2013/07	Shizuoka	Kato. H
14101	Mississippi akamigame	<i>Trachemys scripta elegans</i>	2013/07	Shizuoka	Kato. H
14102	Kusagame	<i>Chinemys reevesii</i>	2013/07	Shizuoka	Kato. H
14165	Nishikihebi sp.	<i>Python sp.</i>	u	u	u
14167	Mississippi akamigame	<i>Trachemys scripta elegans</i>	2013/07	Shizuoka	Kato. H
14371	Kusagame	<i>Chinemys reevesii</i>	2013/07	Shizuoka	Kato. H
14381	Kusagame	<i>Chinemys reevesii</i>	2013/07	Shizuoka	Kato. H
14382	Kamitsukigame	<i>Chelydra serpentina</i>	2013/07	Shizuoka	Kato. H
14404	Tokkeiyamori	<i>Gekko gecko</i>	2013/12	u	Maruyama Zoo
14405	Hasuobi aojitatokage	<i>Tiliqua scincoides</i>	2013/10	u	Maruyama Zoo
14406	Kamitsukigame	<i>Chelydra serpentina</i>	2013/07	Shizuoka	Kato. H
14422	Houshagame	<i>Astrochelys radiata</i>	2013/11	u	Maruyama Zoo
14423	Toge chakuwara	<i>Sauromalus hispidus</i>	2013/11	u	Maruyama Zoo
14424	Burma nishikihebi	<i>Python molurus bivittatus</i>	2013/11	u	Maruyama Zoo
14425	Omakitokage	<i>Corucia zebrata</i>	2013/11	u	Maruyama Zoo
14426	Houshagame	<i>Astrochelys radiata</i>	2013/11	u	Maruyama Zoo
14427	Eboshi kamereon	<i>Chamaeleo calyptoratus</i>	2013/11	u	Maruyama Zoo
14428	Toge chakuwara	<i>Sauromalus hispidus</i>	2013/12	u	Maruyama Zoo
14429	Sai iguana	<i>Cyclura cornuta</i>	2013/12	u	Maruyama Zoo

AS No.	Jpn. Name	Sci. name	Coll. Yr./mon.	Loc. (City, Pref.)	Collector or original owner
14430	Eboshi kamereon	<i>Chamaeleo calyptoratus</i>	2013/12	u	Maruyama Zoo
14431	Kumonosugame	<i>Pyxis arachnoides</i>	2013/12	u	Maruyama Zoo
14432	Eboshi kamereon	<i>Chamaeleo calyptoratus</i>	2013/12	u	Maruyama Zoo
14604	Kusagame	<i>Chinemys reevesii</i>	2013/07	Shizuoka	Kato. H
14605	Mississippi akamimigame	<i>Trachemys scripta elegans</i>	2013/07	Shizuoka	Kato. H
14606	Mississippi akamimigame	<i>Trachemys scripta elegans</i>	2013/07	Shizuoka	Kato. H
14607	Kamitsukigame	<i>Chelydra serpentina</i>	2013/07	Shizuoka	Kato. H
14636	Kiuro anaconda	<i>Eunectes notaeus</i>	2013/12	u	Maruyama Zoo
14641	Supengura yamagame	<i>Geoemyda spengleri</i>	2014/01	u	Maruyama Zoo
14642	Jangurukapetto nishikihebi	<i>Morelia spilota cheynei</i>	2013/12	u	Maruyama Zoo
14643	Gabiarumodoki	<i>Tomistoma schlegelii</i>	2013/12	u	Maruyama Zoo
14644	Matsukasa tokage	<i>Trachydosaurus rugosus</i>	2013/12	u	Maruyama Zoo
14645	Omakitokage	<i>Corucia zebrata</i>	2013/12	u	Maruyama Zoo
14647	Amime nishikihebi	<i>Python reticulatus</i>	2013/12	u	Maruyama Zoo
14648	Midori nishikihebi	<i>Morelia viridis</i>	2014/01	u	Maruyama Zoo
14649	Maree sujio	<i>Elaphe taeniura ridleyi</i>	2014/01	u	Maruyama Zoo
14650	Burma nishikihebi	<i>Python molurus bivittatus</i>	2014/01	u	Maruyama Zoo
14651	Amime nishikihebi	<i>Python reticulatus</i>	2014/01	u	Maruyama Zoo
14652	Eboshi kamereon	<i>Chamaeleo calyptoratus</i>	2014/01	u	Maruyama Zoo
14672	Eboshi kamereon	<i>Chamaeleo calyptoratus</i>	2014/01	u	Maruyama Zoo
14673	Toge chakuwara	<i>Sauromalus hispidus</i>	2014/02	u	Maruyama Zoo
14674	Eboshi kamereon	<i>Chamaeleo calyptoratus</i>	2014/01	u	Maruyama Zoo
14675	Shina wanitokage	<i>Shinisaurus crocodilurus</i>	2013/12	u	Maruyama Zoo
14676	Indo setakagame	<i>Pangshura tecta</i>	2014/01	u	Maruyama Zoo
14677	Shina wanitokage	<i>Shinisaurus crocodilurus</i>	2014/01	u	Maruyama Zoo
14678	Eboshi kamereon	<i>Chamaeleo calyptoratus</i>	2014/02	u	Maruyama Zoo
14679	Houshagame	<i>Astrochelys radiata</i>	2014/02	u	Maruyama Zoo
14680	Toge chakuwara	<i>Sauromalus hispidus</i>	2014/02	u	Maruyama Zoo
14681	Hon habu	<i>Protobothrops flavoviridis</i>	2013/11	Kagoshima	Takenaka. S
14682	Hon habu	<i>Protobothrops flavoviridis</i>	2013/11	Kagoshima	Takenaka. S
14683	Hon habu	<i>Protobothrops flavoviridis</i>	2013/u	Kagoshima	Takenaka. S
14684	Hon habu	<i>Protobothrops flavoviridis</i>	2013/u	Kagoshima	Takenaka. S
14685	Hon habu	<i>Protobothrops flavoviridis</i>	2013/u	Kagoshima	Takenaka. S
14686	Hon habu	<i>Protobothrops flavoviridis</i>	2013/u	Kagoshima	Takenaka. S
14687	Hon habu	<i>Protobothrops flavoviridis</i>	2013/u	Kagoshima	Takenaka. S
14688	Hon habu	<i>Protobothrops flavoviridis</i>	2013/u	Kagoshima	Takenaka. S
14689	Hon habu	<i>Protobothrops flavoviridis</i>	2013/u	Kagoshima	Takenaka. S
14692	Toge chakuwara	<i>Sauromalus hispidus</i>	2014/02	u	Maruyama Zoo
14693	Eboshi kamereon	<i>Chamaeleo calyptoratus</i>	2014/01	u	Maruyama Zoo
14694	Jangurukapetto nishikihebi	<i>Morelia spilota cheynei</i>	2014/02	u	Maruyama Zoo
14695	Kiuro anaconda	<i>Eunectes notaeus</i>	2014/02	u	Maruyama Zoo
14696	Matsukasa tokage	<i>Trachydosaurus rugosus</i>	2014/02	u	Maruyama Zoo
14697	Matsukasa tokage	<i>Trachydosaurus rugosus</i>	2014/02	u	Maruyama Zoo
14698	Midori nishikihebi	<i>Morelia viridis</i>	2014/01	u	Maruyama Zoo
14699	Kiuro anaconda	<i>Eunectes notaeus</i>	2014/01	u	Maruyama Zoo
14700	Aohoso ootokage	<i>Varanus macraei</i>	2014/01	u	Maruyama Zoo
14701	Aohoso ootokage	<i>Varanus macraei</i>	2014/02	u	Maruyama Zoo
14702	Omakitokage	<i>Corucia zebrata</i>	2014/02	u	Maruyama Zoo
14703	Hirao rikugame	<i>Pyxis planicauda</i>	2014/02	u	Maruyama Zoo
14704	Akadaisho	<i>Elaphe guttata</i>	2013/12	u	Takaki. Y
14730	Akame kabutotokage	<i>Tribolonotus gracilis</i>	u	u	Kojin. W

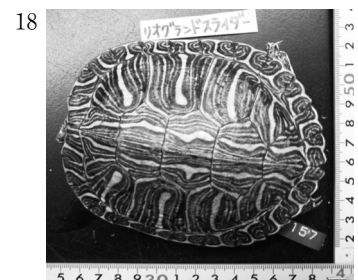
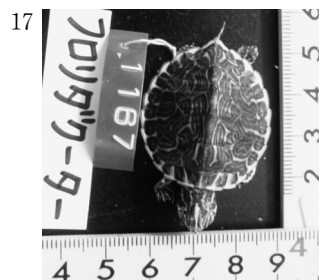
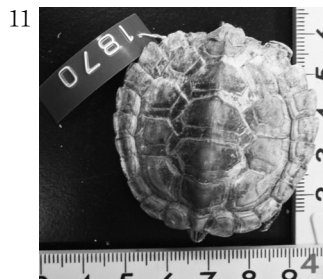
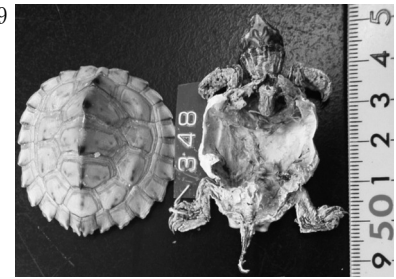
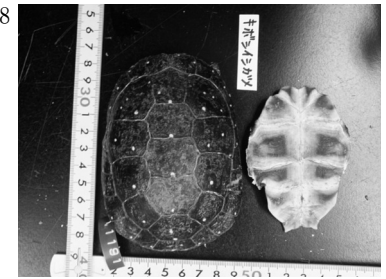
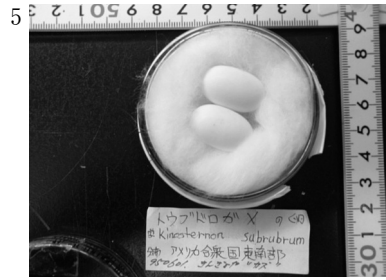
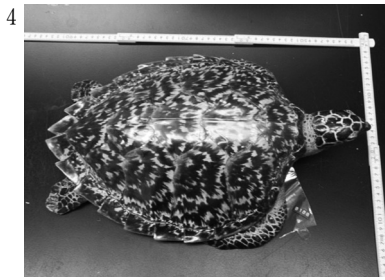
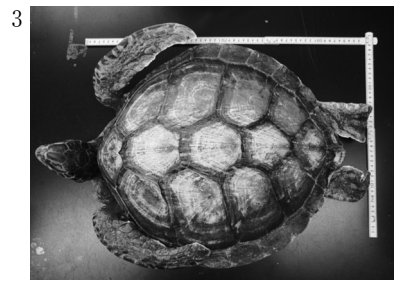
Appendix 2 Herpetological specimens and materials in the collection of the collection of Wild Animal Medical Center, Rakuno Gakuen University.

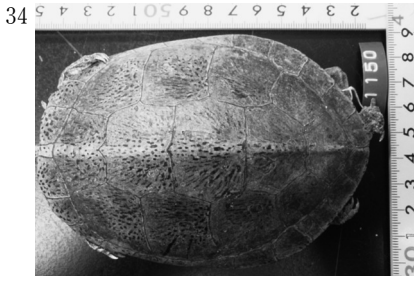
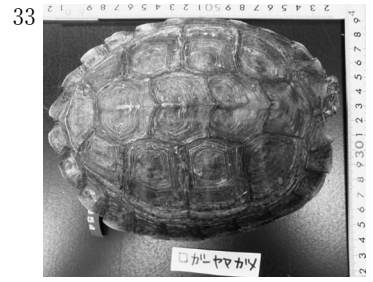
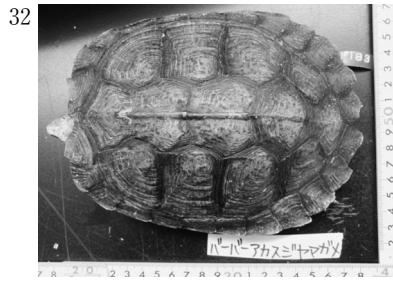
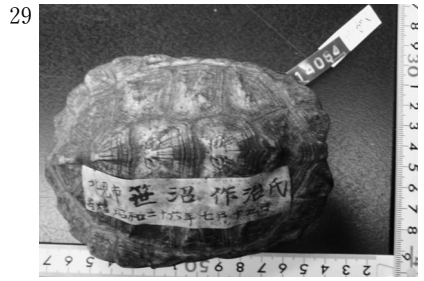
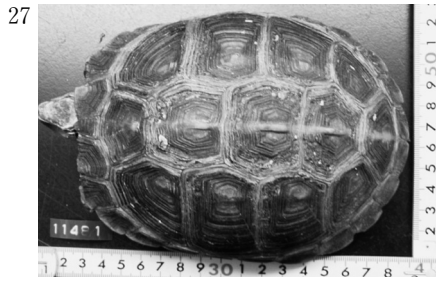
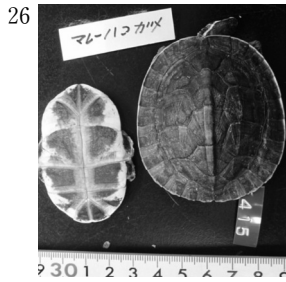
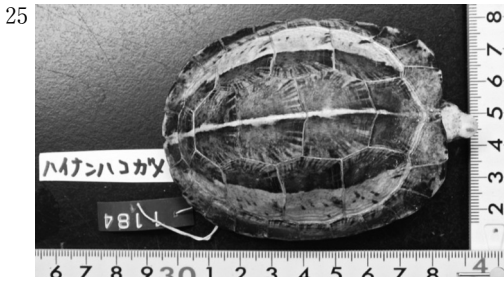
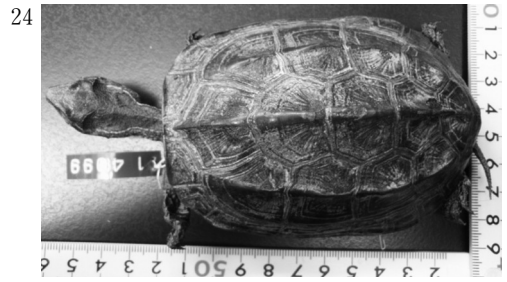
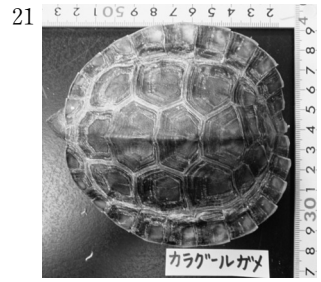
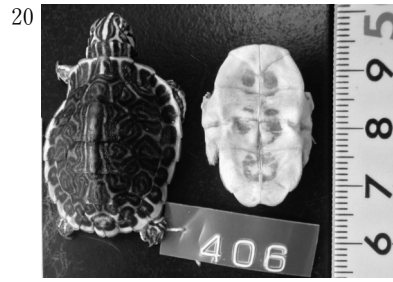
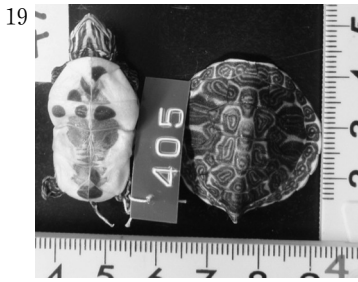
Fig. No.	AS No.	Jpn. Name	Sci. name
1	AS321	Aka umigame	<i>Caretta caretta</i>
2	AS8822	Aka umigame	<i>Caretta caretta</i>
3	AS334	Ao umigame	<i>Chelonia mydas</i>
4	AS8164	Taimai	<i>Eretmochelys imbricate</i>
5	AS1162	Toubu dorogame	<i>Kinosternon subrubrum</i>
6	AS1162	Toubu dorogame	<i>Kinosternon subrubrum</i>
7	AS411	Nioigame sp.	<i>Kinosternon</i> sp.
8	AS1191	Kiboshi ishigame	<i>Clemmys guttata</i>
9	AS348	Barbour chizugame	<i>Graptemys barbouri</i>
10	AS349	Barbour chizugame	<i>Graptemys barbouri</i>
11	AS1870	Texas chizugame	<i>Graptemys versa</i>
12	AS1190	Chizugame sp.	<i>Graptemys</i> sp.
13	AS408	Kisugame	<i>Malaclemys terrapin</i>
14	AS1871	Nishiki kisugame	<i>Malaclemys terrapin macrospilota</i>
15	AS409	Konkinna numagame	<i>Pseudemys concinna</i>
16	AS1873	Konkinna numagame	<i>Pseudemys concinna</i>
17	AS1167	Florida numagame	<i>Pseudemys floridana</i>
18	AS1157	Mississippi akamimigame	<i>Trachemys scripta elegans</i>
19	AS405	Kibaragame	<i>Trachemys scripta scripta</i>
20	AS406	Kibaragame	<i>Trachemys scripta scripta</i>
21	AS1154	Karagurugame	<i>Callagur borneoensis</i>
22	AS1187	Kanton kusagame	<i>Chinemys nigricans</i>
23	AS1869	Kanton kusagame	<i>Chinemys nigricans</i>
24	AS14099	Kusagame	<i>Chinemys reevesii</i>
25	AS1184	Hainan moegihakogame	<i>Cistoclemmys galbinifrons hainanensis</i>
26	AS415	Maree hakogame	<i>Cuora amboinensis</i>
27	AS11481	Maree hakogame	<i>Cuora amboinensis</i>
28	AS1160	Kanmurigame	<i>Hardella thurjii</i>
29	AS14064	Nihon ishigame	<i>Mauremys japonica</i>
30	AS1188	Minami ishigame	<i>Mauremys mutica</i>
31	AS414	Hanagame	<i>Ocadia sinensis</i>
32	AS1183	Barbour akasuji yamagame	<i>Rhinoclemmys pulcherrima rogerbarbouri</i>
33	AS1183	Barbour akasuji yamagame	<i>Rhinoclemmys pulcherrima rogerbarbouri</i>
34	AS1150	Yotsume ishigame	<i>Sacalia quadriocellata</i>
35	AS1155	Hojiro kurogame	<i>Siebenrockiella crassicollis</i>
36	AS1153	Ooatamagame	<i>Platysternon megacephalum</i>
37	AS1158	Chugoku ooatamagame	<i>Platysternon megacephalum megacephalum</i>
38	AS1156	Shiui ooatamagame	<i>Platysternon megacephalum shiui</i>
39	AS1879	Akaashigame	<i>Geochelone carbonaria</i>
40	AS3031	Akaashigame	<i>Geochelone carbonaria</i>
41	AS11274	Hoshigame	<i>Geochelone elegans</i>
42	AS389	Hyoumongame	<i>Geochelone pardalis</i>
43	AS11480	Babukokku hyoumongame	<i>Geochelone pardalis babcocki</i>
44	AS390	Kezume rikugame	<i>Geochelone sulcata</i>
45	AS11443	Kezume rikugame	<i>Geochelone sulcata</i>
46	AS388	Seoregame sp.	<i>Kinixys</i> sp.
47	AS3032	Emisu mutsuasigame	<i>Manouria emys</i>
48	AS392	Girisha rikugame	<i>Testudo graeca</i>
49	AS393	Fuchizori rikugame	<i>Testudo marginata</i>

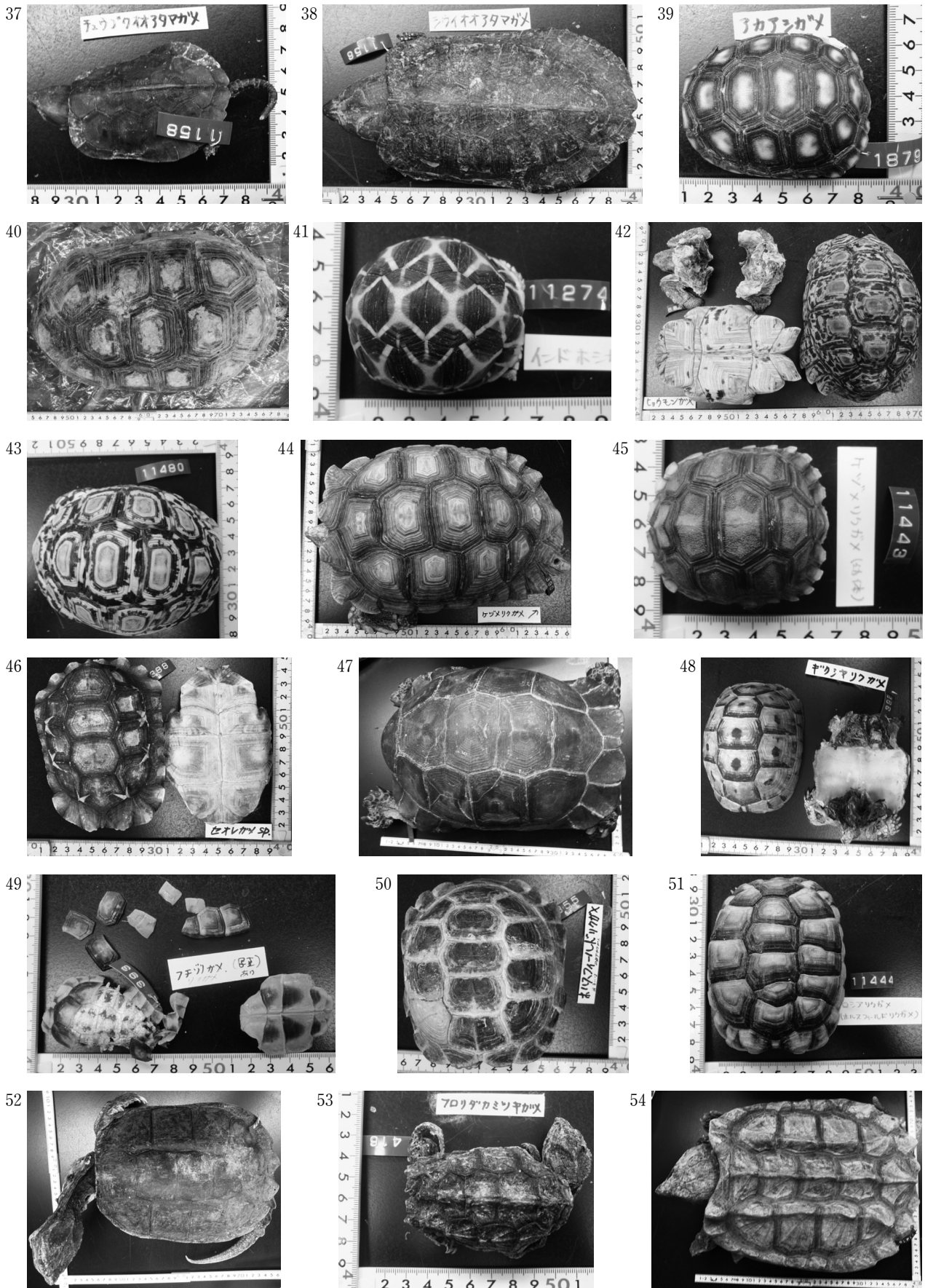
Fig. No.	AS No.	Jpn. Name	Sci. name
50	AS355	Horsfield rikugame	<i>Testudo horsfieldi</i>
51	AS11444	Horsfield rikugame	<i>Testudo horsfieldi</i>
52	AS3578	Kamitsukigame	<i>Chelydra serpentine</i>
53	AS416	Florida kamitsukigame	<i>Chelydra serpentina osceola</i>
54	AS11419	Wanigame	<i>Macrochelys temminckii</i>
55	AS11435	Wanigame	<i>Macrochelys temminckii</i>
56	AS14034	Supponmodoki	<i>Carettochelys insculpta</i>
57	AS407	Nihon suppon	<i>Pelodiscus sinensis</i>
58	AS352	Siebenrock nagakubigame	<i>Chelodina siebenrocki</i>
59	AS1151	Siebenrock nagakubigame	<i>Chelodina siebenrocki</i>
60	AS413	Nagakubigame sp.	<i>Chelodina</i> sp.
61	AS347	Matamata	<i>Chelus fimbriatus</i>
62	AS395	Matamata	<i>Chelus fimbriatus</i>
63	AS412	Matamata	<i>Chelus fimbriatus</i>
64	AS396	Macquari magekubigame	<i>Emydura macquarrii</i>
65	AS353	Afurica numa yokokubigame	<i>Pelomedusa subrufa subrufa</i>
66	AS399	Afurica numa yokokubigame	<i>Pelomedusa subrufa subrufa</i>
67	AS12275	Karotesu sp.	<i>Calotes</i> sp.
68	AS11425	Erimakitokage	<i>Chlamydosaurus kingie</i>
69	AS2431	Oo moridoragaon	<i>Gonocephalus grandis</i>
70	AS2425	Hokaketokage sp.	<i>Hydrosaurus</i> sp.
71	AS5797	Okinawa kinoboritokage	<i>Japalura polygonata polygonata</i>
72	AS2427	Indoshina water doragon	<i>Physignathus cocincinus</i>
73	AS2428	Indoshina water doragon	<i>Physignathus cocincinus</i>
74	AS2692	Indoshina water doragon	<i>Physignathus cocincinus</i>
75	AS2422	Mari togeoagama	<i>Uromastyx dispar maliensis</i>
76	AS2423	Togeoagama sp.	<i>Uromastyx</i> sp.
77	AS9726	Eboshi kamereon	<i>Chamaeleo calyptoratus</i>
78	AS8511	Pansa kamereon	<i>Furcifer pardalis</i>
79	AS5794	Boushi tokagemodoki	<i>Coleonyx mitratus</i>
80	AS12379	Boushi tokagemodoki	<i>Coleonyx mitratus</i>
81	AS12380	Boushi tokagemodoki	<i>Coleonyx mitratus</i>
82	AS2685	Hyoumon tokagemodoki	<i>Eublepharis macularius</i>
83	AS5579	Ashinaga tokagemodoki	<i>Goniurosaurus araneus</i>
84	AS2676	Newguinea oo hosoyubiyamori	<i>Cyrtodactylus irianjayaensis</i>
85	AS2699	Newguinea oo hosoyubiyamori	<i>Cyrtodactylus irianjayaensis</i>
86	AS5592	Tokkeiyamori	<i>Gekko gekko</i>
87	AS5509	Tokkeiyamori	<i>Gekko gekko</i>
88	AS5510	Tokkeiyamori	<i>Gekko gekko</i>
89	AS5511	Tokkeiyamori	<i>Gekko gekko</i>
90	AS5512	Tokkeiyamori	<i>Gekko gekko</i>
91	AS11436	Yashiyamori	<i>Gekko vittatus</i>
92	AS11347	Yashiyamori	<i>Gekko vittatus</i>
93	AS11438	Yashiyamori	<i>Gekko vittatus</i>
94	AS11442	Somewake sasakureyamori	<i>Paroedura pictus</i>
95	AS12381	Somewake sasakureyamori	<i>Paroedura pictus</i>
96	AS12382	Somewake sasakureyamori	<i>Paroedura pictus</i>
97	AS12383	Somewake sasakureyamori	<i>Paroedura pictus</i>
98	AS12387	Somewake sasakureyamori	<i>Paroedura pictus</i>
99	AS5588	Kuru tobiyamori	<i>Ptychozoon kuhli</i>

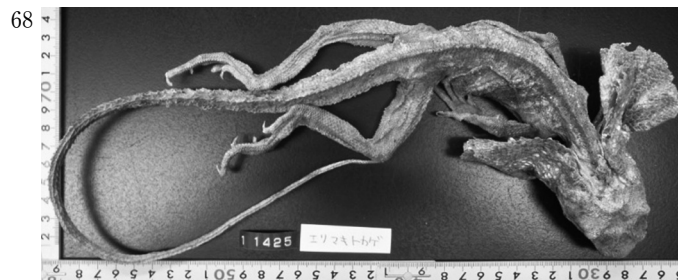
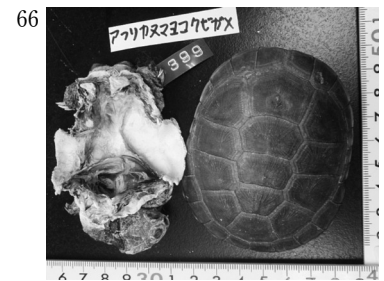
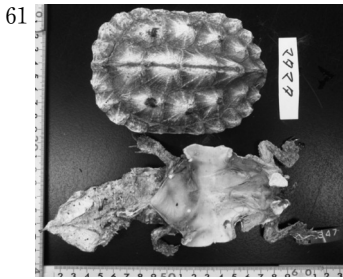
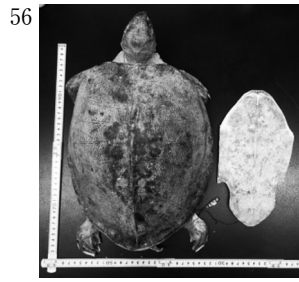
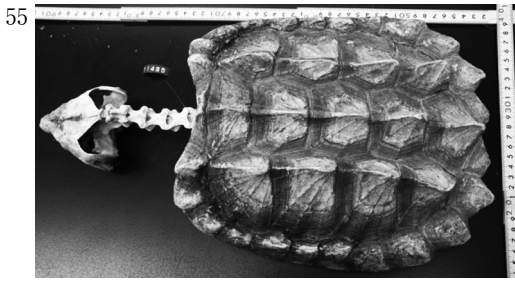
Fig. No.	AS No.	Jpn. Name	Sci. name
100	AS12384	Kuru tobiyamori	<i>Ptychozoon kuhli</i>
101	AS12385	Kuru tobiyamori	<i>Ptychozoon kuhli</i>
102	AS5583	Torukisutan sukinkuyamori	<i>Teratoscincus scincus</i>
103	AS2903	Yoroitokage sp.	<i>Cordylus</i> sp.
104	AS5796	Gurin anoru	<i>Anolis carolinensis</i>
105	AS1661	Anoru sp.	<i>Anolis</i> sp.
106	AS2902	Gurin basirisuku	<i>Basiliscus plumifrons</i>
107	AS2426	Kubiwatokage	<i>Crotaphytus collaris</i>
108	AS2694	Hyoutokage	<i>Gambelia wislizenii</i>
109	AS5580	Gurin iguana	<i>Iguana iguana</i>
110	AS11441	Gurin iguana	<i>Iguana iguana</i>
111	AS12386	Gurin iguana	<i>Iguana iguana</i>
112	AS1168	Chakuwara sp.	<i>Sauromalus</i> sp.
113	AS2701	Marakaito haritokage	<i>Sceloporus malachiticus</i>
114	AS1169	Iwa haritokage	<i>Sceloporus poinsettia</i>
115	AS3203	Nihon kanahebi	<i>Takydromus tachydromoides</i>
116	AS9054	Omakitokage	<i>Corucia zebrata</i>
117	AS394	Nihon tokage	<i>Plestiodon japonicus</i>
118	AS2420	Hasuobi aojitatokage	<i>Tiliqua scincoides</i>
119	AS2421	Hasuobi aojitatokage	<i>Tiliqua scincoides</i>
120	AS2698	Teguu	<i>Tupinambis teguixin</i>
121	AS2665	Dyumeriru ootokage	<i>Varanus dumerili</i>
122	AS2424	Sabanna ootokage	<i>Varanus exanthematicus</i>
123	AS11422	Sabanna ootokage	<i>Varanus exanthematicus</i>
124	AS2656	Nile ootokage	<i>Varanus niloticus</i>
125	AS2667	Midorihoso ootokage	<i>Varanus prasinus</i>
126	AS2653	Ootokage sp.	<i>Varanus</i> sp.
127	AS14091	Ootokage sp.	<i>Varanus</i> sp.
128	AS5323	Boa	<i>Boa constrictor</i>
129	AS2686	Niji boa	<i>Epicrates cenchria</i>
130	AS2700	Kenya sunaboa	<i>Eryx colubrinus</i>
131	AS2904	Brown sunaboa	<i>Eryx johni</i>
132	AS2654	Rojii boa	<i>Lichanura trivirgata</i>
133	AS1173	Midori nishikihebi	<i>Morelia viridis</i>
134	AS2674	Midori nishikihebi	<i>Morelia viridis</i>
135	AS2677	Midori nishikihebi	<i>Morelia viridis</i>
136	AS1180	Burma nishikihebi	<i>Python molurus bivittatus</i>
137	AS2687	Indo nishikihebi	<i>Python molurus molurus</i>
138	AS2688	Boru nishikihebi	<i>Python regius</i>
139	AS5366	Boru nishikihebi	<i>Python regius</i>
140	AS2670	Nishikihebi sp.	<i>Python</i> sp.
141	AS14165	Nishikihebi sp.	<i>Python</i> sp.
142	AS5045	Akamata	<i>Dinodon semicarinatum</i>
143	AS12389	Akamata	<i>Dinodon semicarinatum</i>
144	AS800	Aodaisho	<i>Elaphe climacophora</i>
145	AS2907	Aodaisho	<i>Elaphe climacophora</i>
146	AS6854	Aodaisho	<i>Elaphe climacophora</i>
147	AS10494	Aodaisho	<i>Elaphe climacophora</i>
148	AS10495	Aodaisho	<i>Elaphe climacophora</i>
149	AS11258	Aodaisho	<i>Elaphe climacophora</i>

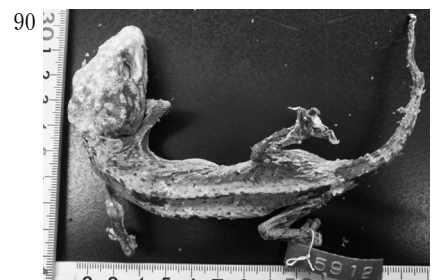
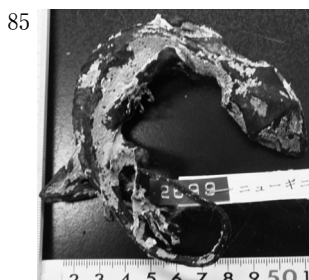
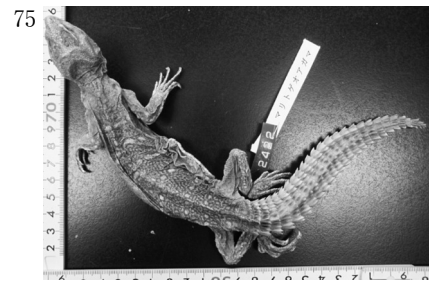
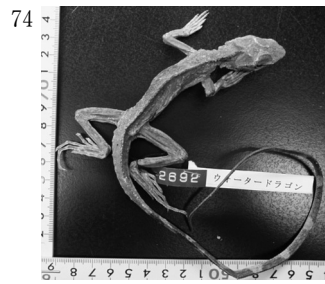
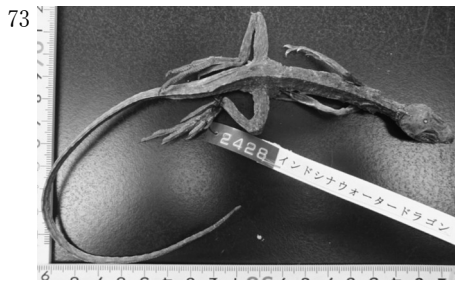
Fig. No.	AS No.	Jpn. Name	Sci. name
150	AS11263	Aodaisho	<i>Elaphe climacophora</i>
151	AS11273	Aodaisho	<i>Elaphe climacophora</i>
152	AS11424	Aodaisho	<i>Elaphe climacophora</i>
153	AS11439	Aodaisho	<i>Elaphe climacophora</i>
154	AS14072	Aodaisho	<i>Elaphe climacophora</i>
155	AS14078	Aodaisho	<i>Elaphe climacophora</i>
156	AS14079	Aodaisho	<i>Elaphe climacophora</i>
157	AS5334	Jimuguri	<i>Elaphe conspicillata</i>
158	AS5365	Jimuguri	<i>Elaphe conspicillata</i>
159	AS12344	Jimuguri	<i>Elaphe conspicillata</i>
160	AS12388	Jimuguri	<i>Elaphe conspicillata</i>
161	AS14040	Jimuguri	<i>Elaphe conspicillata</i>
162	AS14049	Jimuguri	<i>Elaphe conspicillata</i>
163	AS14082	Jimuguri	<i>Elaphe conspicillata</i>
164	AS14083	Jimuguri	<i>Elaphe conspicillata</i>
165	AS14084	Jimuguri	<i>Elaphe conspicillata</i>
166	AS1174	Akadaisho	<i>Elaphe guttata</i>
167	AS2666	Akadaisho	<i>Elaphe guttata</i>
168	AS2681	Akadaisho	<i>Elaphe guttata</i>
169	AS231	Shimahebi	<i>Elaphe quadrivirgata</i>
170	AS5053	Shimahebi	<i>Elaphe quadrivirgata</i>
171	AS6863	Shimahebi	<i>Elaphe quadrivirgata</i>
172	AS11423	Shimahebi	<i>Elaphe quadrivirgata</i>
173	AS14043	Shimahebi	<i>Elaphe quadrivirgata</i>
174	AS14085	Shimahebi	<i>Elaphe quadrivirgata</i>
175	AS11339	Sakishima sujio	<i>Elaphe taeniura schmackeri</i>
176	AS14077	Namera sp.	<i>Elaphe</i> sp.
177	SA2691	Seibu shishibanahebi	<i>Heterodon nasicus</i>
178	AS1177	California kinguhebi	<i>Lampropeltis getula californiae</i>
179	AS1176	Florida kinguhebi	<i>Lampropeltis getula floridana</i>
180	AS2682	Arizona yamakinguhebi	<i>Lampropeltis pyromelana pyromelana</i>
181	AS2693	Mirukuhebi	<i>Lampropeltis triangulum</i>
182	AS2693	Mirukuhebi	<i>Lampropeltis triangulum</i>
183	AS2690	Yamakinguhebi	<i>Lampropeltis zonata</i>
184	AS2658	Kinguhebi sp.	<i>Lampropeltis</i> sp.
185	AS2683	Gaatahebi sp.	<i>Thamnophis</i> sp.
186	AS14031	Fudo kobura sp.	<i>Naja</i> sp.
187	AS14039	Yamakagashi	<i>Rhabdophis tigrinus</i>
188	AS14038	Nihon Mamushi	<i>Gloydus blomhoffi</i>
189	AS5302	Habu sp.	<i>Protobothrops</i> sp.
190	AS14056	Habu sp.	<i>Protobothrops</i> sp.
191	AS8701	Takachihoebebi	<i>Achalinus spinalis</i>
192	AS14089	Yousukouwani	<i>Alligator sinensis</i>
193	AS14092	Yousukouwani	<i>Alligator sinensis</i>
194	AS14090	Shamuwani	<i>Crocodylus siamensis</i>

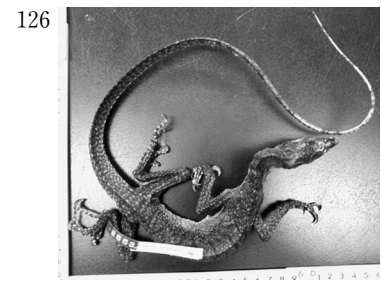
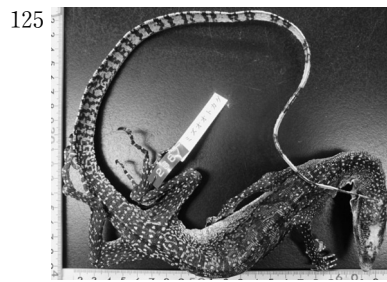
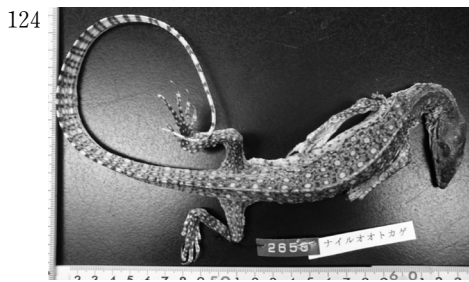
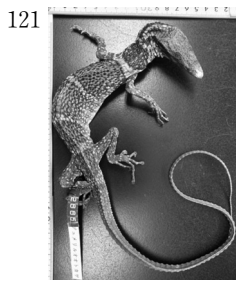
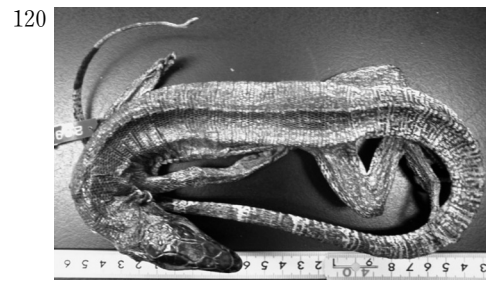
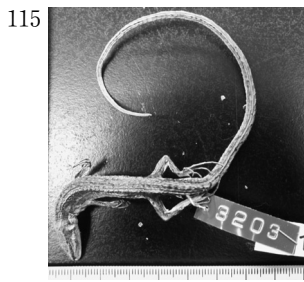
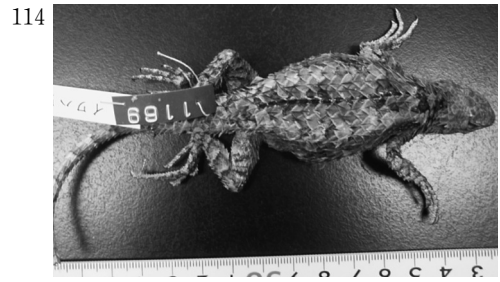


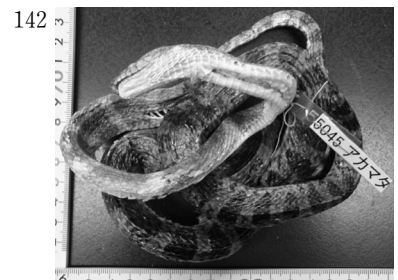
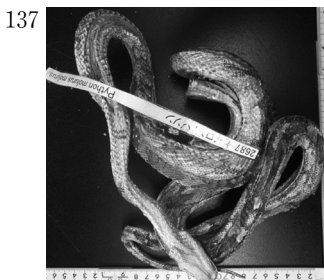
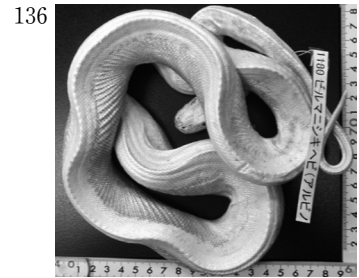
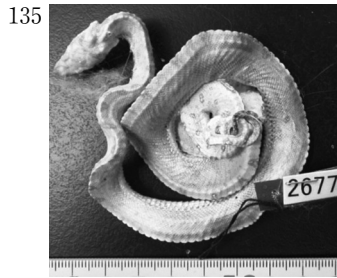
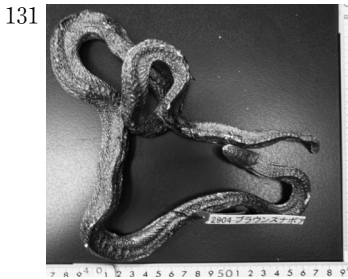
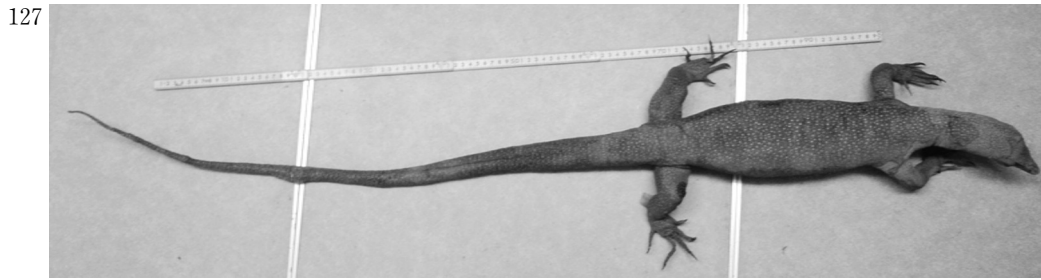


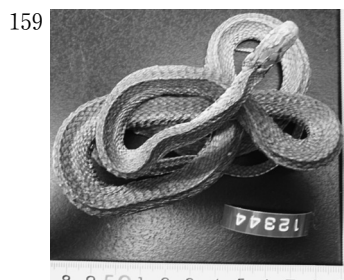
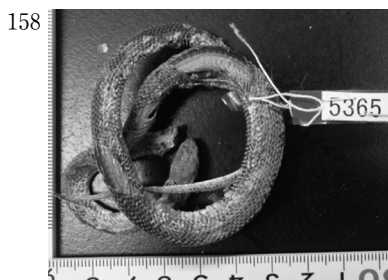
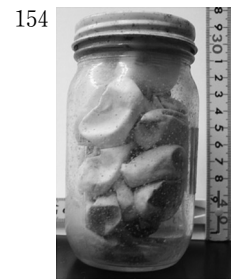
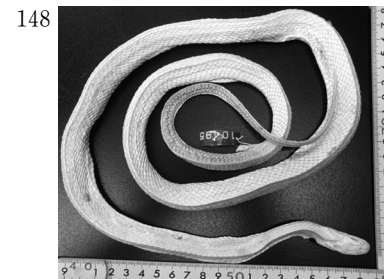
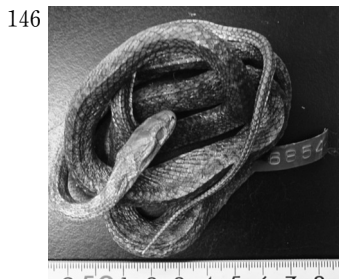
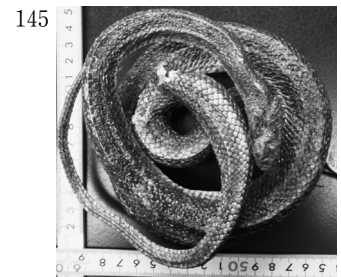
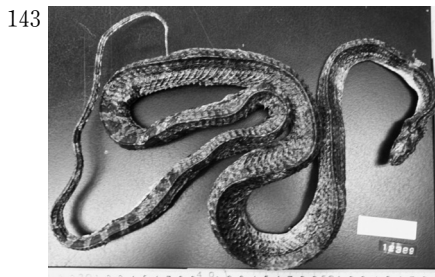


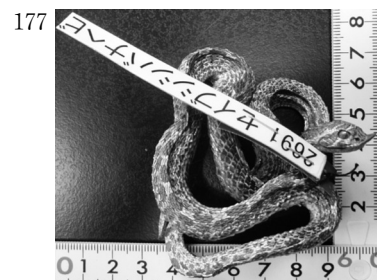
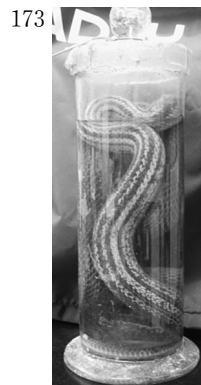
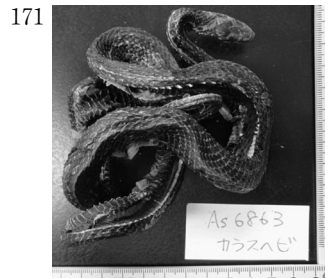
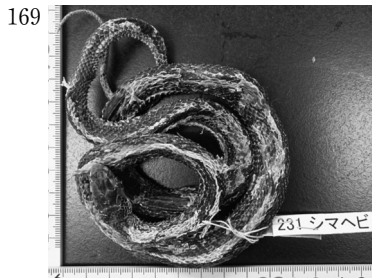
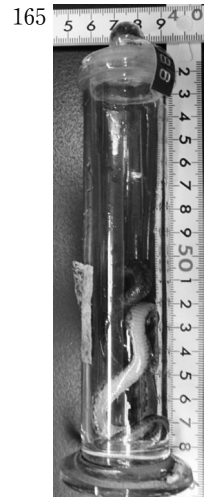
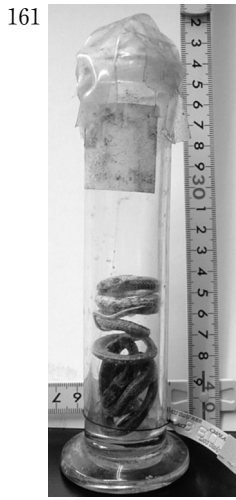


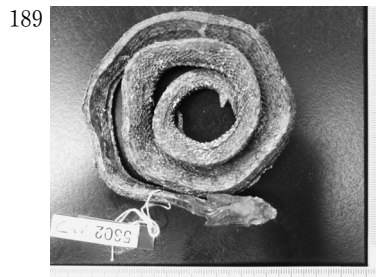
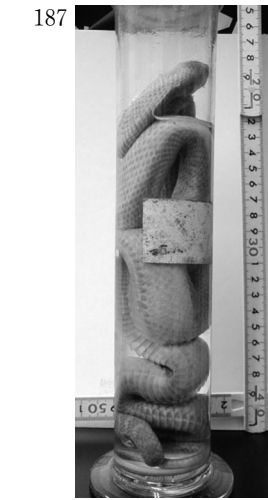
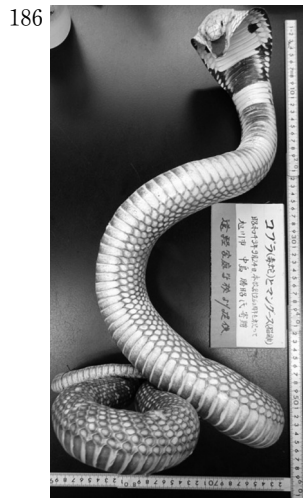
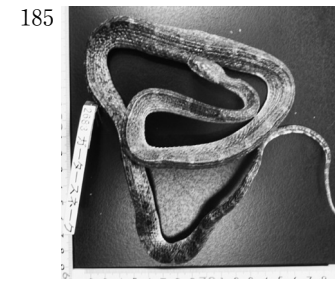
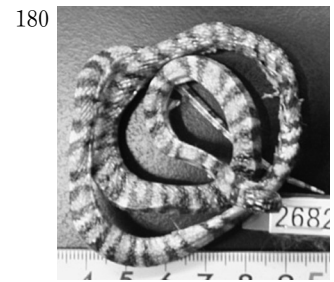
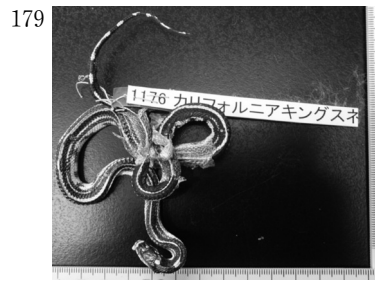
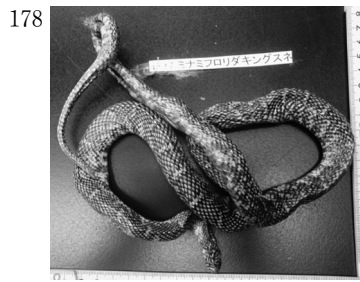




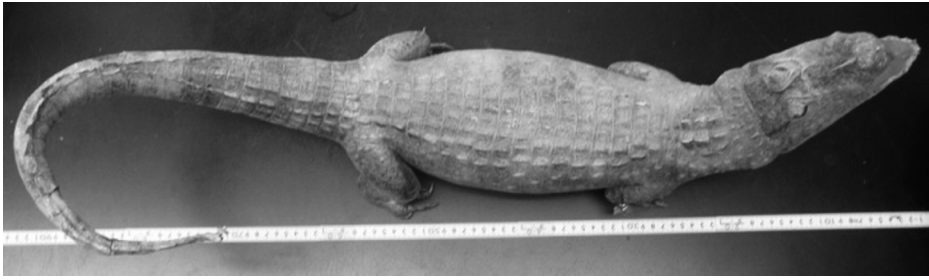








192



193



194

